



# bridleside

Floorplan Brochure



# LIVE CLOSER TO NATURE

Bridleside at Ockley Park is the ideal place to call home. Our two, three and four bedroom high energy efficient specification properties are surrounded by countryside but close enough to London and Brighton that you never feel too far away.

Each home has been built to increase energy efficiency with air source heat pumps as standard and provide you with an idyllic space to call your own.

Bridleside is the perfect community with large outdoor communal spaces and the development has a variety of options for all, with homes available for families, couples and single people alike across all stages of life.

Bridleside is a short walk to Hassocks village which has a variety of amenities including local shops, schools and Hassocks train station. Parking spaces are available for all homes giving you even more opportunity to explore the local countryside and beyond.

With all properties professionally managed you can enjoy your new home with complete peace of mind.

---

## Floorplans colour key

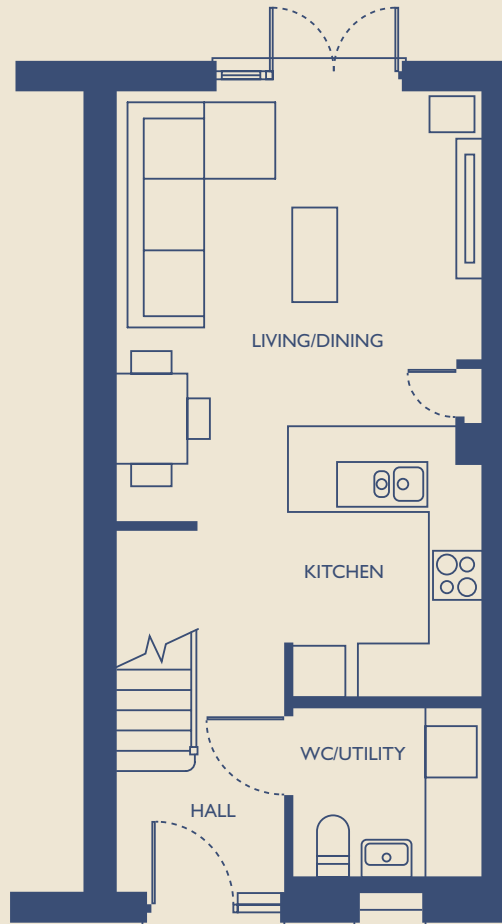
The floorplans in this brochure are colour coded according to the number of bedrooms in the property, as shown here.



Beaford

# Ground Floor

---

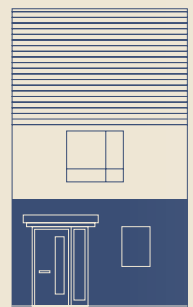


| 2 |

---

Beaford

Two bedroom house  
778 sq ft (72.25 sq m)

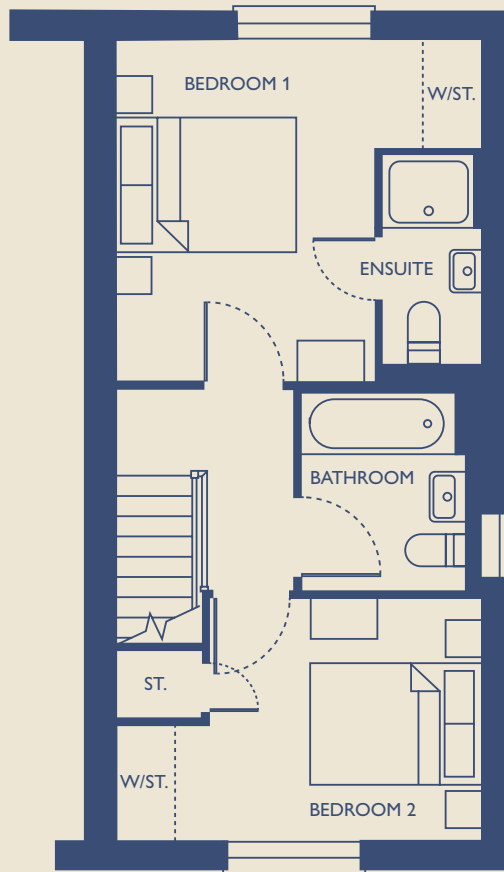


**bridleside**

Beaford

# First Floor

---

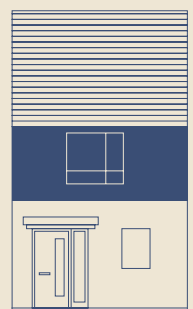


---

Beaford

Two bedroom house  
778 sq ft (72.25 sq m)

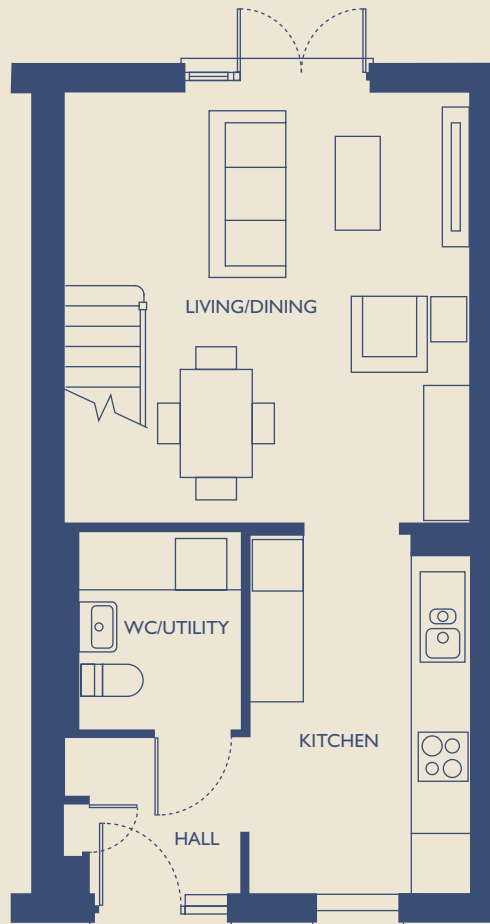
**bridleside**



Mapleford

# Ground Floor

---



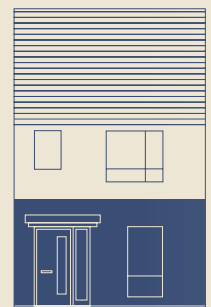
| 4 |

---

Mapleford

Two bedroom house  
864 sq ft (80.26 sq m)

**bridleside**



Mapleford

# First Floor

---

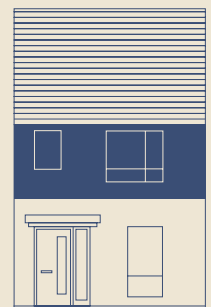


---

Mapleford

Two bedroom house  
864 sq ft (80.26 sq m)

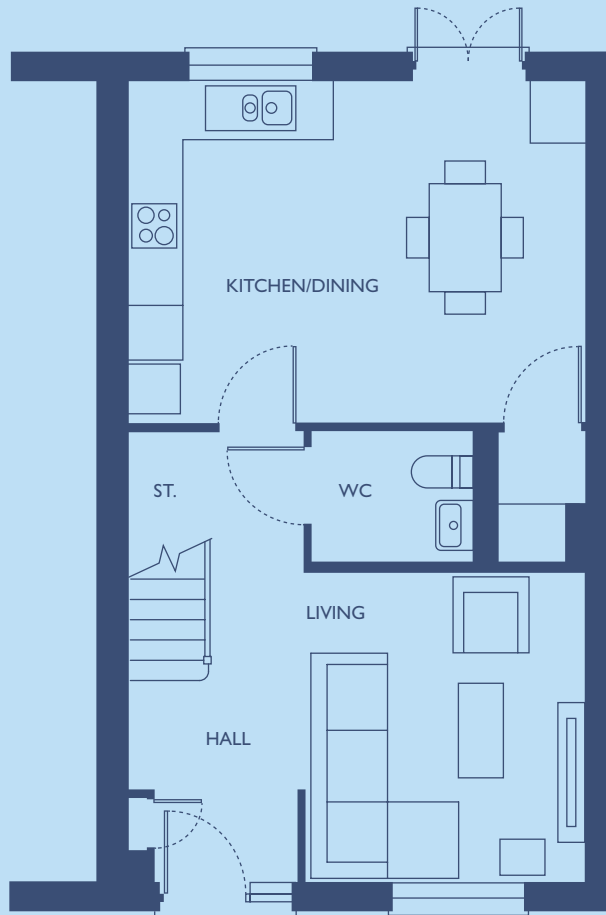
**bridleside**



Eynsford

# Ground Floor

---



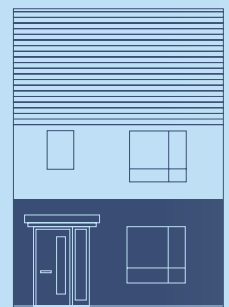
| 6 |

---

Eynsford

Three bedroom house  
972 sq ft (90.26 sq m)

**bridleside**

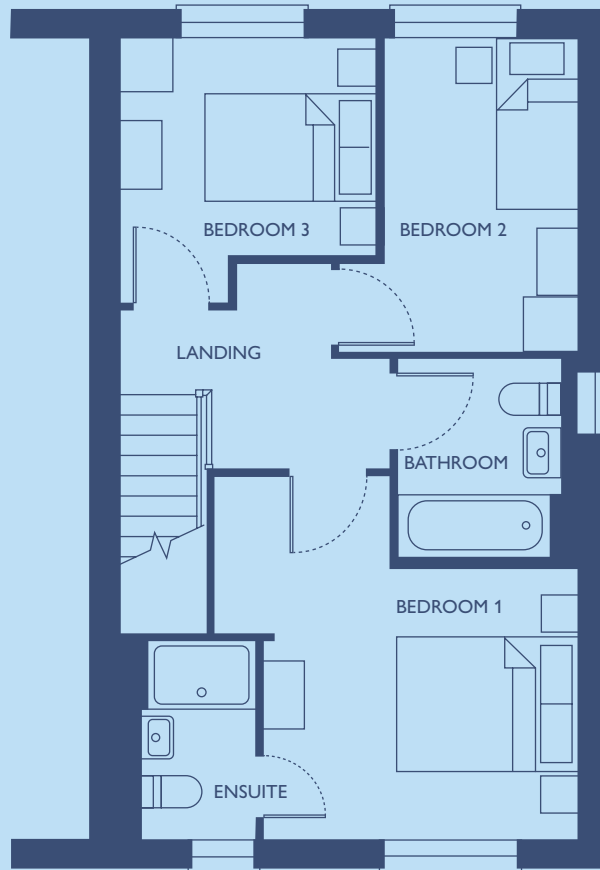




Eynsford

# First Floor

---



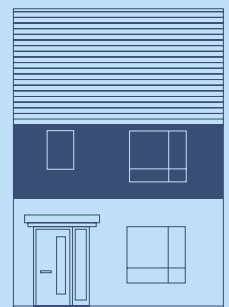
| 7 |

---

Eynsford

Three bedroom house  
972 sq ft (90.26 sq m)

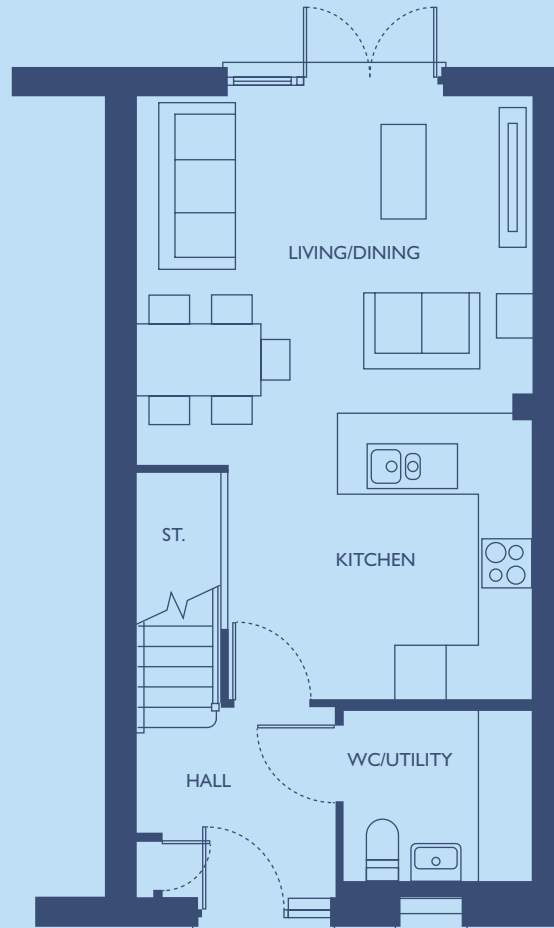
**bridleside**



Harrton

# Ground Floor

---



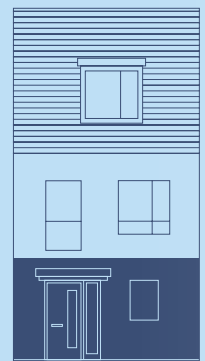
| 8 |

---

Harrton

Three bedroom house  
1140 sq ft (105.93 sq m)

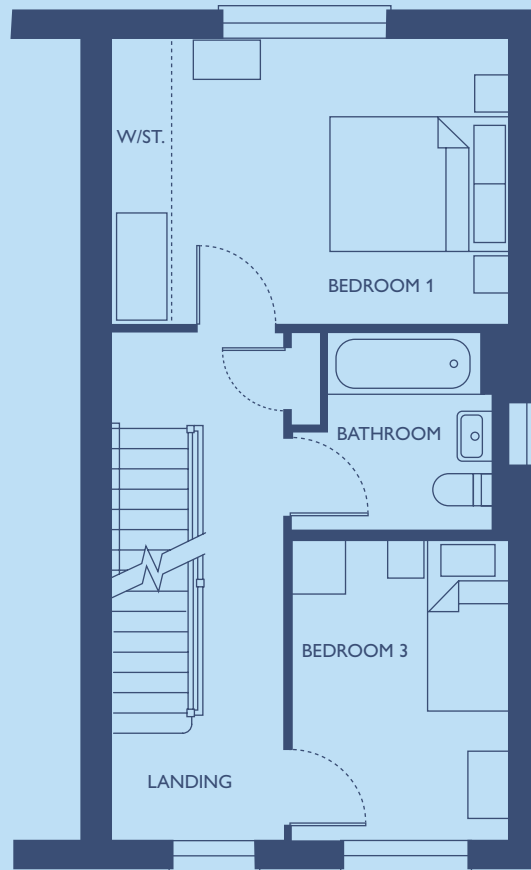
**bridleside**



Harrton

# First Floor

---

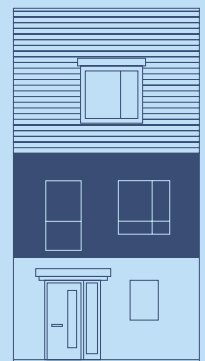


---

Harrton

Three bedroom house  
1140 sq ft (105.93 sq m)

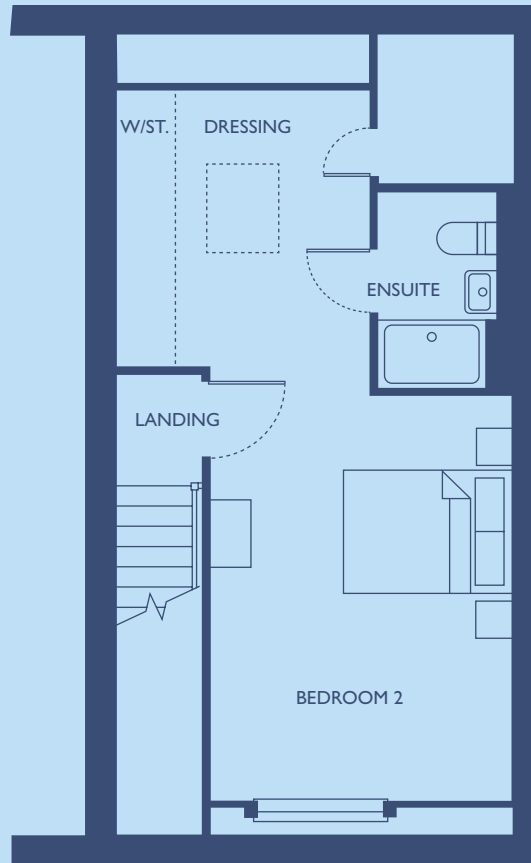
**bridleside**



Harrton

# Second Floor

---



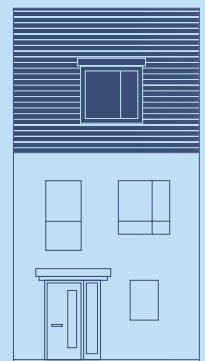
|  
10  
|

---

Harrton

Three bedroom house  
1140 sq ft (105.93 sq m)

**bridleside**

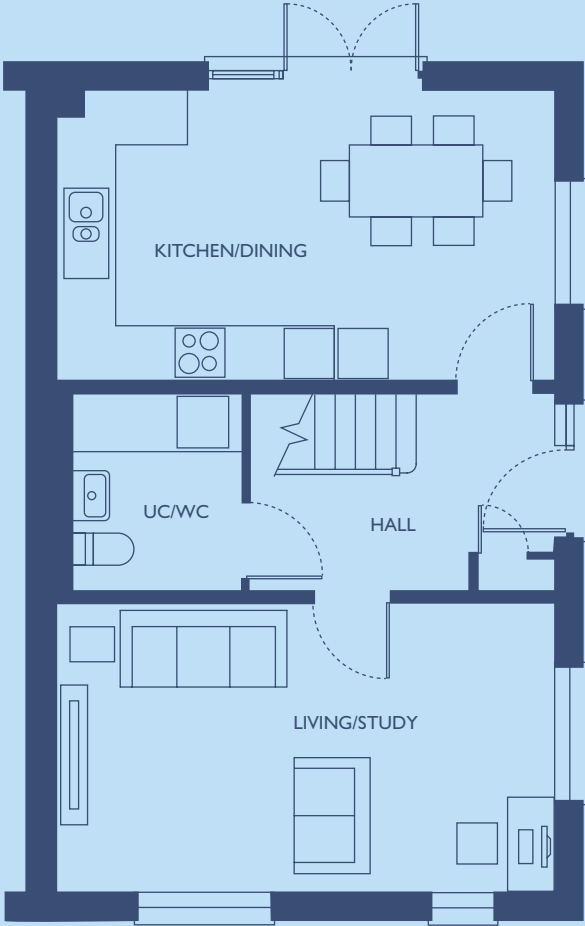




Aynesdale

# Ground Floor

---

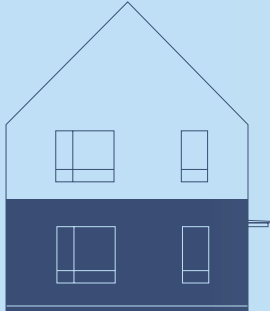


| 12 |

---

Aynesdale

Three bedroom house  
1058 sq ft (98.27 sq m)

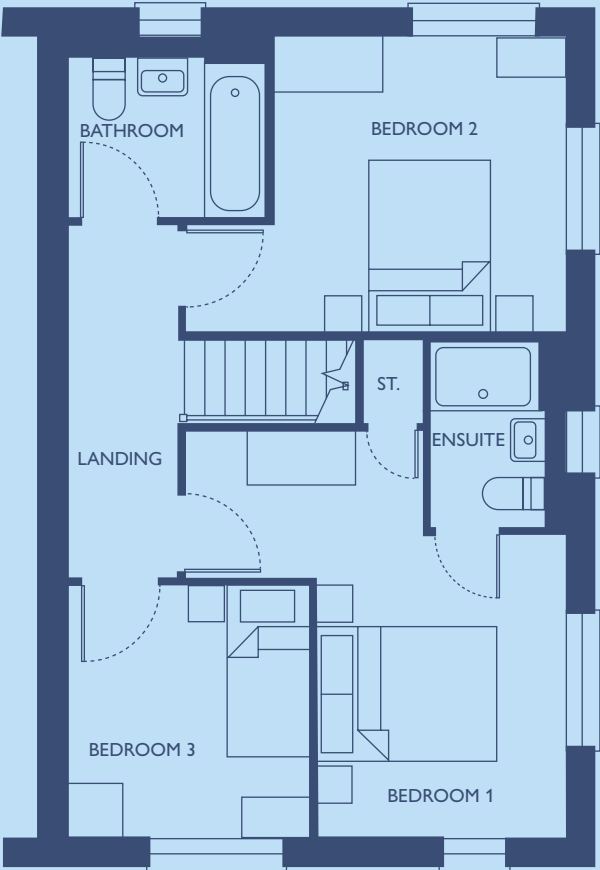


**bridleside**

Aynesdale

# First Floor

---

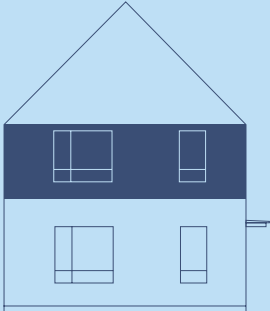


---

Aynesdale

Three bedroom house  
1058 sq ft (98.27 sq m)

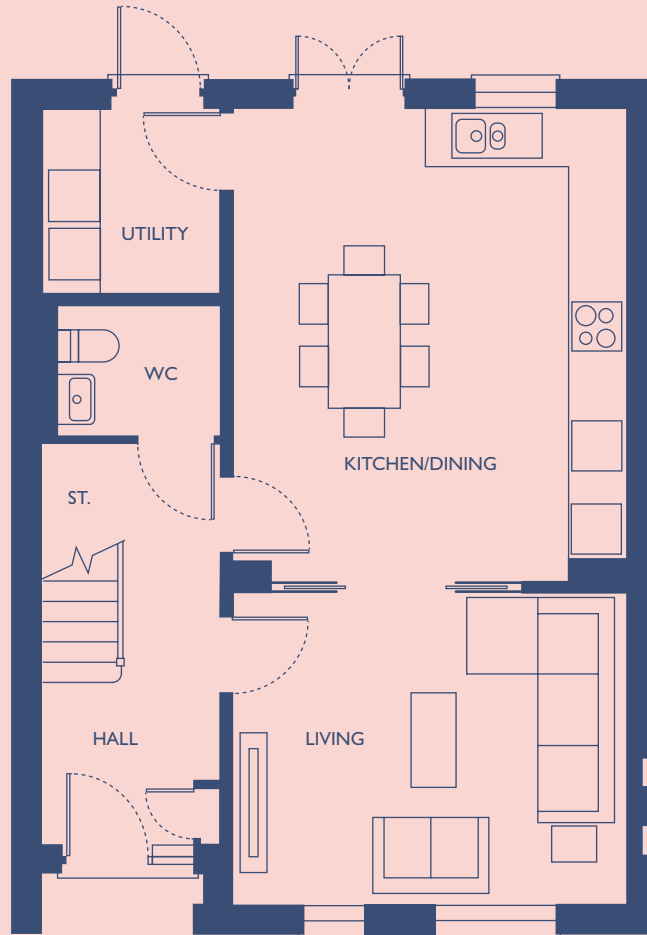
**bridleside**



Bittesford

# Ground Floor

---

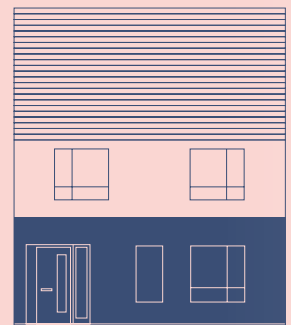


| 14 |

---

Bittesford

Four bedroom house  
1236 sq ft (114.85 sq m)



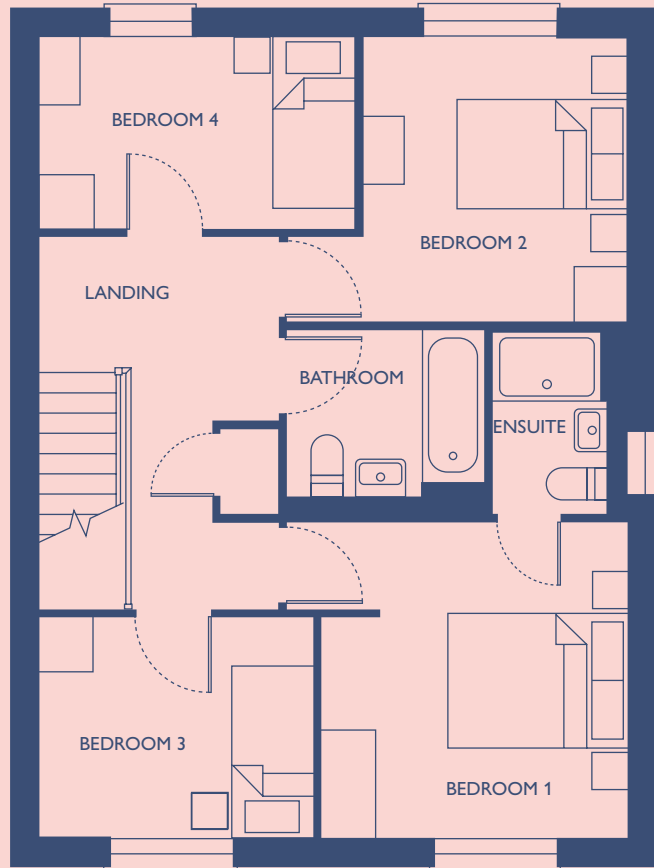
**bridleside**



Bittesford

# First Floor

---

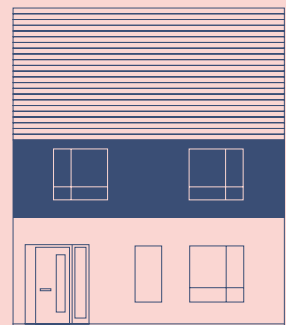


---

Bittesford

Four bedroom house  
1236 sq ft (114.85 sq m)

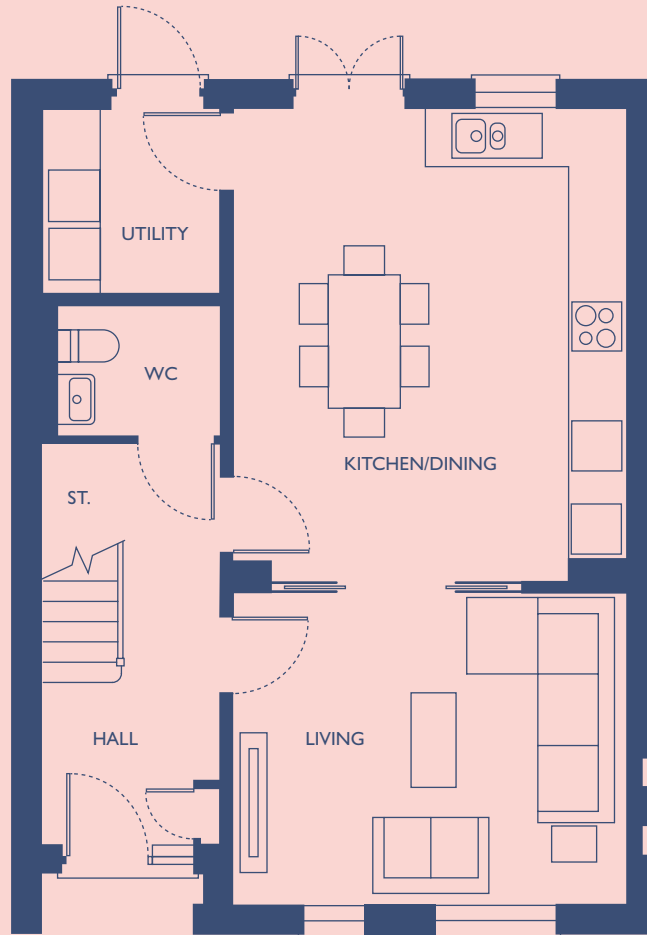
**bridleside**



Bittesford

# Ground Floor

---

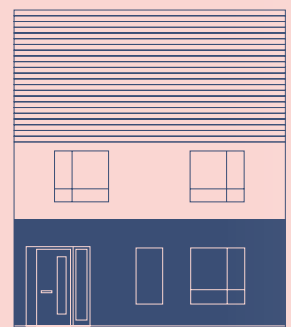


| 16 |

---

Bittesford

Four bedroom house  
1236 sq ft (114.85 sq m)

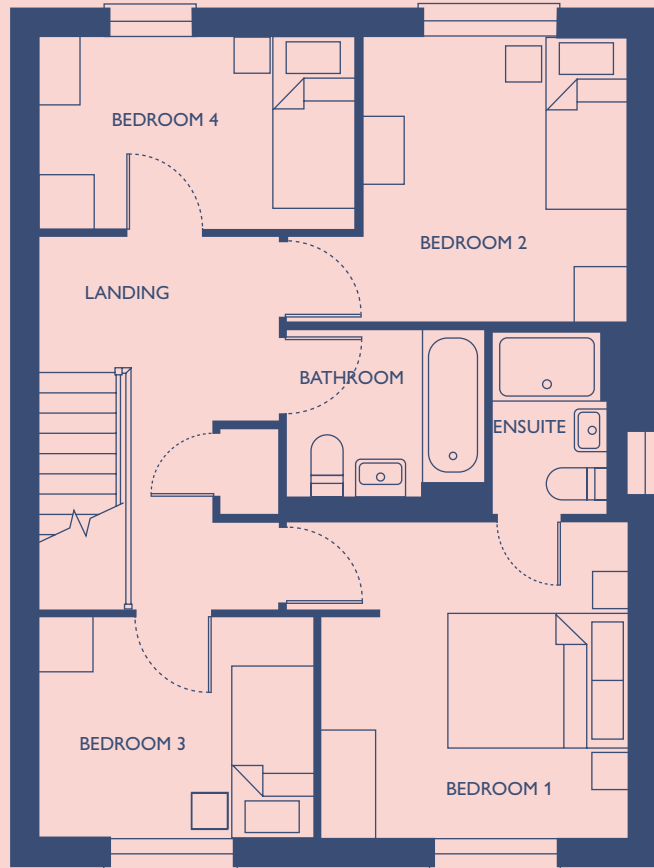


**bridleside**

Bittesford

# First Floor

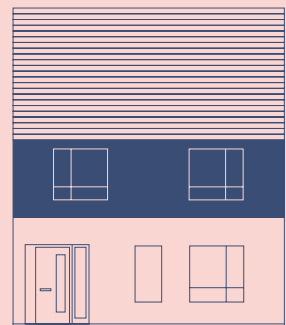
---



---

Bittesford

Four bedroom house  
1236 sq ft (114.85 sq m)

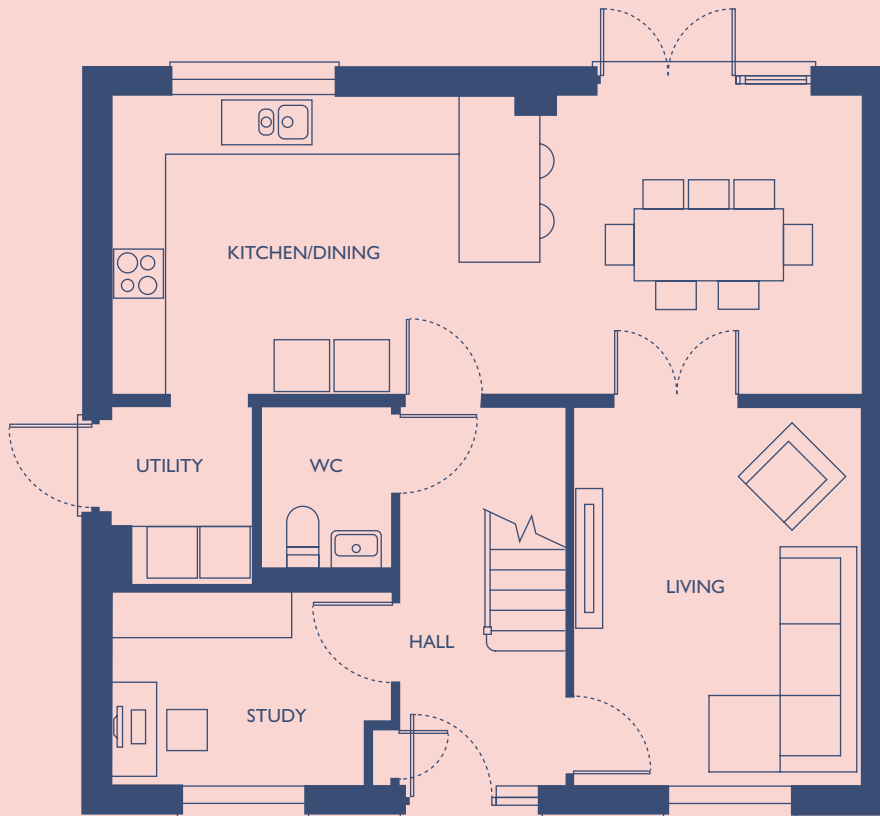


**bridleside**

Rightford

# Ground Floor

---

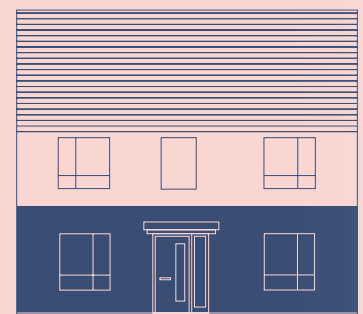


| 18 |

---

Rightford

Four bedroom house  
1374 sq ft (127.67 sq m)

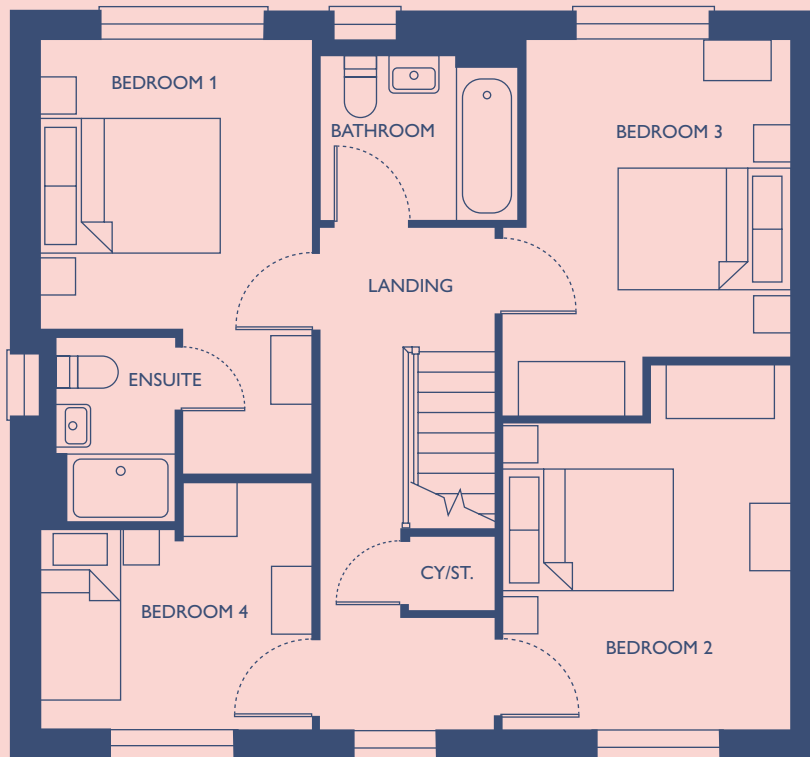


**bridleside**

Rightford

# First Floor

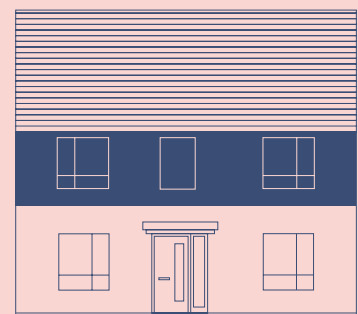
---



---

Rightford

Four bedroom house  
1374 sq ft (127.67 sq m)

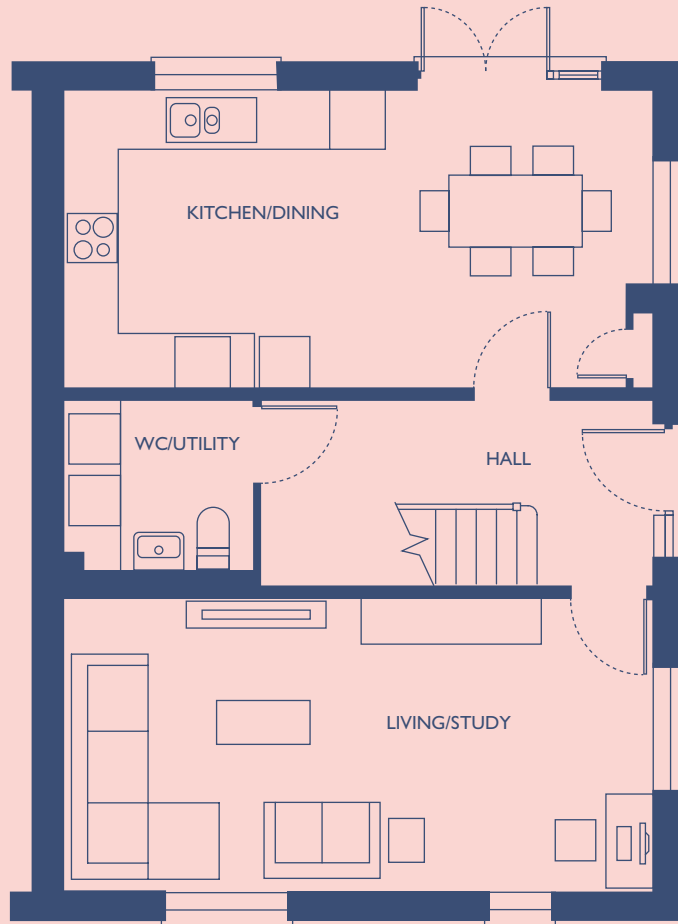


**bridleside**

Plumdale

# Ground Floor

---



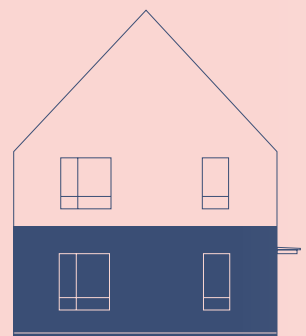
| 20 |

---

Plumdale

Four bedroom house  
1252 sq ft (116.29 sq m)

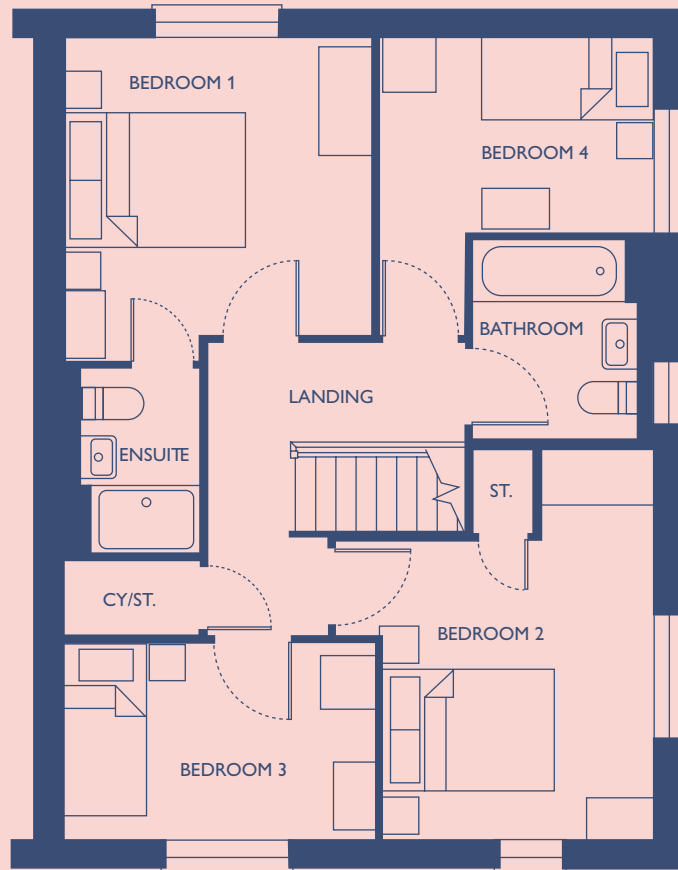
**bridleside**



Plumdale

# First Floor

---

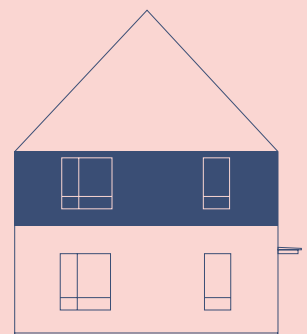


---

Plumdale

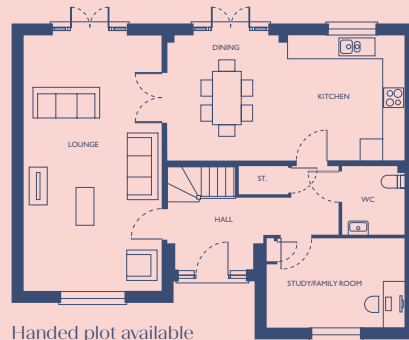
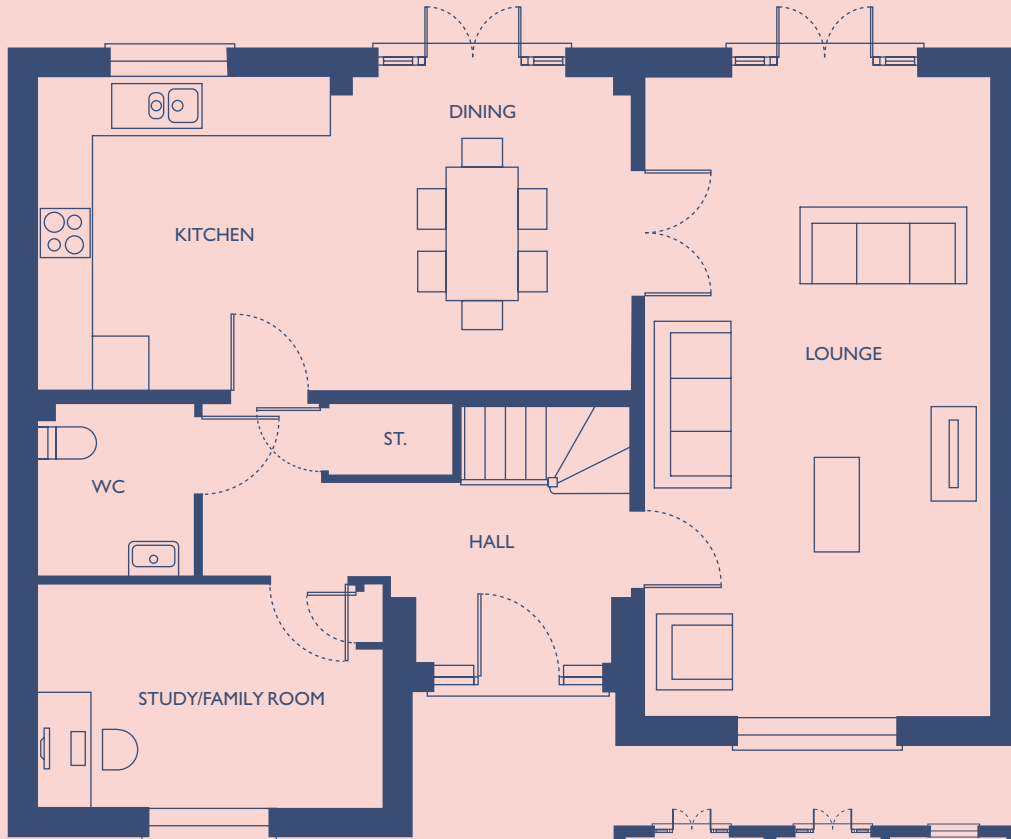
Four bedroom house  
1252 sq ft (116.29 sq m)

**bridleside**



Ransford

# Ground Floor



Handed plot available

| 22 |

Ransford

Four bedroom house  
1643 sq ft (152.61 sq m)

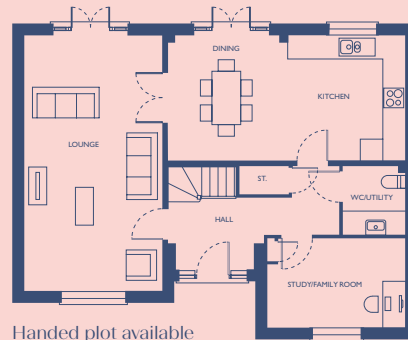
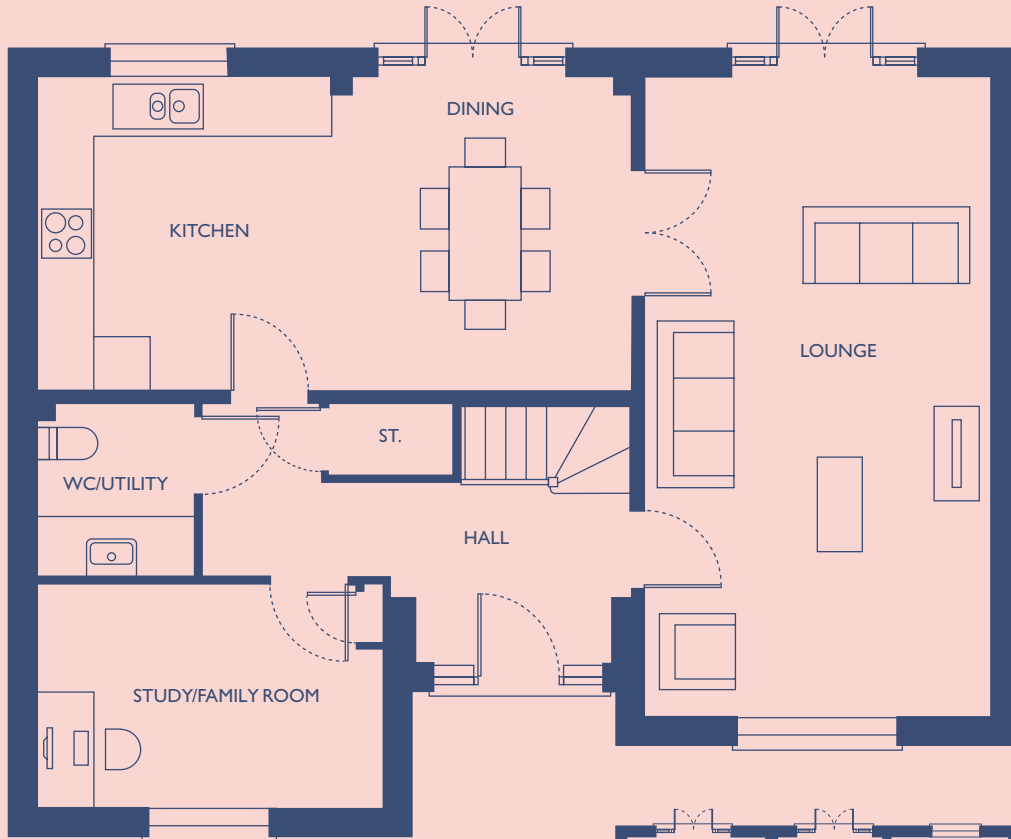


**bridleside**



Ransford

# Ground Floor



Ransford

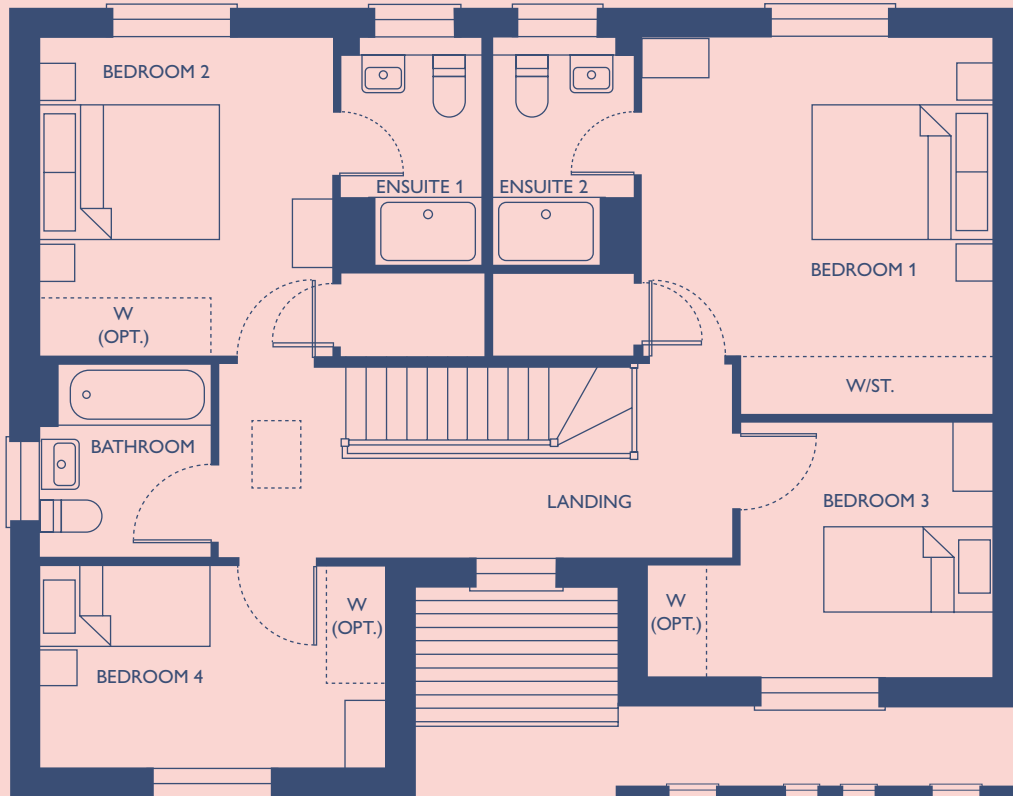
Four bedroom house  
1643 sq ft (152.61 sq m)



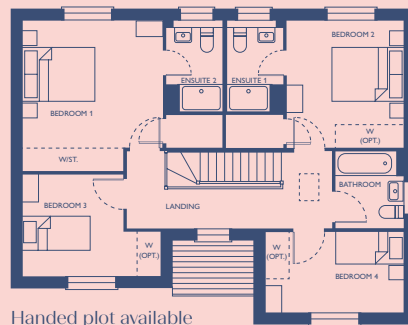
**bridleside**

Ransford

# First Floor



| 24 |



Handed plot available

Ransford

Four bedroom house  
1643 sq ft (152.61 sq m)



**bridleside**



Waysdale

# Ground Floor



Handed plot available

| 26 |

Waysdale

Four bedroom house  
1525 sq ft (141.70 sq m)



**bridleside**

Waysdale

# Ground Floor



Handed plot available

Waysdale

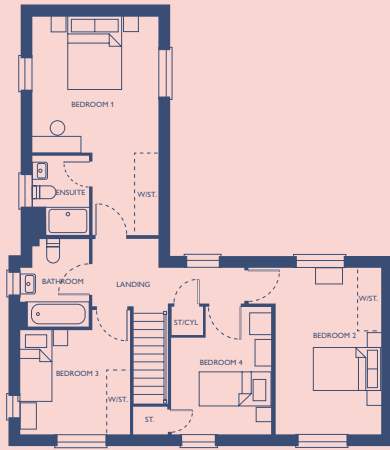
Four bedroom house  
1525 sq ft (141.70 sq m)



**bridleside**

Waysdale

# First Floor



Handed plot available



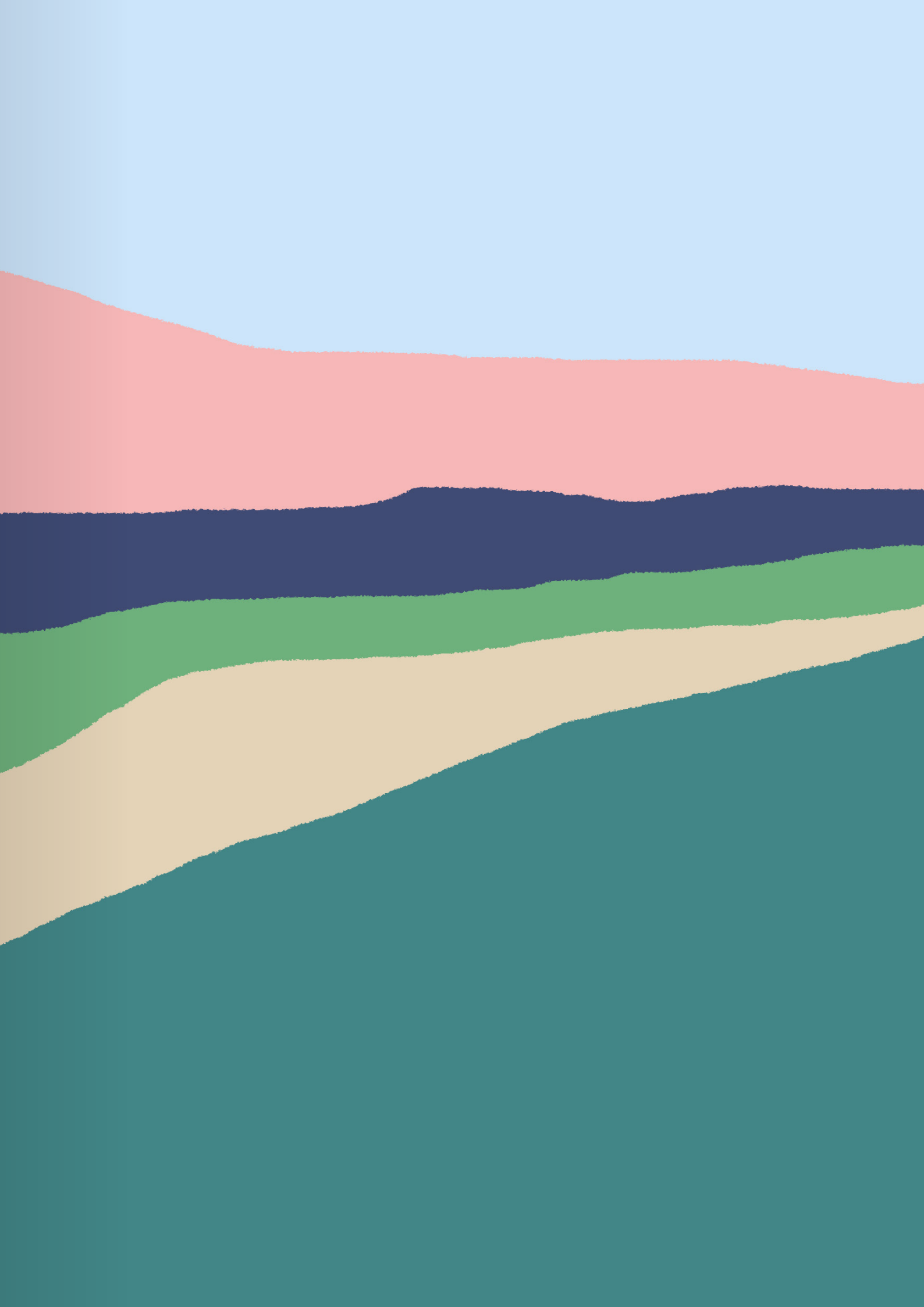
| 28 |

Waysdale

Four bedroom house  
1525 sq ft (141.70 sq m)

**bridleside**







bridleside



bridleside

bridleside

Floorplan Brochure

